

Coffee Talk Express

Tuesday July 27, 2021



The Lion Inn
250-788-9990 & Suites
 Weekly & monthly rates available
 thelionsuite.com 5132 46th Ave



Dawson Creek Realty
 Chetwynd Branch
250 788 9909

ALMA WALTER

DAN GRODZUIK

JODIE ETHIER

MYRA GRODZUIK



250 788 5168

250 788 6435

250 788 5043

250 788 6365

SUPPORT WILDFIRE CREWS: DO NOT TAKE UNNECESSARY RISKS IN THE BACKCOUNTRY

Whatever your activities this summer, remember wildfire crews are working in the bush.

The public is asked to be mindful of the needs of B.C.'s wildfire response by making a careful trip plan when hiking and being careful in the backcountry.

Not only is there a high risk of wildfire throughout the province, there have also been incidents this summer requiring BC Wildfire Service support for the co-ordinated rescues of hikers. These calls require the diversion of helicopters from the fire line and may challenge progress on fire suppression efforts.

While aviation resources are being used throughout the province by the BC Wildfire Service, there are processes for these resources to be accessed by search and rescue when they are required.

The Province thanks recreationalists for reporting fires that they have spotted, in backcountry areas and elsewhere. A small fire can quickly become a serious wildfire. Report a wildfire by dialing *5555 on a cellphone or calling toll-free: 1 800 663-5555

While most provincial parks remain open for recreational and camping activities, due to the serious nature of the current wildfire situation, BC Parks, in co-ordination with the BC Wildfire Service, has closed numerous parks to protect public safety. A list of BC Parks closures is available online: <https://bcparks.ca/wildfire>

Prior to closing parks, multiple factors are taken into consideration, such as weather conditions and forecasts, access routes, the presence of active fires and fire-danger ratings. Wildfires are dynamic, and circumstances can change quickly. BC Parks and the BC Wildfire Service assess situations daily.

Continued inside paper

Computer Sales & Service

PROMOTIONAL PRODUCTS

T-shirts - Mugs - Bags
 Plaques - & More!



Pencil Box Stationery
YOUR ONE STOP OFFICE SHOP

Phone: 250-788-3422 Fax: 250-788-3405

Office Supplies Office Furniture Photocopying
 Faxing Service Laminating Custom Printing
 Work Wear Safety Supplies

Cell Phones & Accessories
 Gaming Accessories

Chetwynd 3 Day Forecast

Tue 07/27	Wed 07/28	Thu 07/29
Sunny	Mainly sunny	Sunny



21°



25°



26°

ROYAL LEPAGE
ASPIRE REALTY

**Thinking of buying or selling?
 Call Our Office Today!
 250-788-9225**



ANTHONY BOOS
250-719-5454
 Personal Real Estate Corporation



KAREN BOOS
250-788-6598
 Personal Real Estate Corporation



JULIA NELSON
250-788-6707
 Realtor®



advertising@coffeetalkexpress.com classifieds@coffeetalkexpress.com
SERVING CHETWYND AND AREA - CHECK OUT OUR WEBSITE COFFEETALKEXPRESS.COM

**PH: 250.788.3422
 FAX: 250.788.3405**

Coffee Talk Express has exclusive copyright of all advertisements, photographs and content created by Coffee Talk Express staff. Any reproduction requires consent of the owner.
 Some or all of the content published is not necessarily the views and/or opinions of Coffee Talk Express

Free Classifieds

Classifieds are for personal use only and are published on a first-come, first-served basis. To submit your personal classified ad
Email: classifieds@coffeetalkexpress.com

MISCELLANEOUS

Washer for sale, works great, \$75. Call 250-556-4118

Excalibur Phoenix crossbow, 175 lb draw weight, comes with arrows & accessories. \$1000. Call 250-788-2390

Kenmore refrigerator in good cond looking for a new home, white, top freezer, quiet, signs of wear, 30" wide x 66" high x 30" deep. Older Whirlpool built-in dishwasher in good cond, signs of wear. Make a reasonable offer for one or both. Call 250-401-7366

Model 700 30:06 case/lots of shells, \$600 OBO; new Springfield 300 mag, case, bipods, shells, \$1300 OBO. MUST HAVE PAL; nice older Browning compound bow, new sight system/case, \$600 OBO; Puma collectors' knife, \$600 OBO. Call 250-613-2946

2 mountain bikes - 1 Marco, 1 Supercycle; parts for a Ford 1988 pickup. Call 250-874-0170

2x6x12 lift of lumber, 100 pieces; 2x6x14 lift of lumber, 100 pieces; 2x6x16 lift of lumber, 100 pieces. Call 250-788-5116

25lb cashew bags, \$80. Call 250-401-7091

40' long seacan with extra height, hardwood floor. Brand new condition. \$6500 OBO. Call Vic at 250-783-5535

Samsung Galaxy Watch Active, water resistant to 50m with bluetooth GPS and wifi. Like new. \$125 OBO. Call 780-777-7144

Black walnut china cabinet with glass doors, 2 piece with mirror back & light, \$250 OBO; 2 piece French antique china cabinet, \$300 OBO; dark brown 7 drawer dresser, \$50 OBO; 2 drawer dresser, \$50 OBO. Call before 8pm 250-788-3709

Firewood for free. Just cut down 3 trees, want gone. Call 250-788-3577

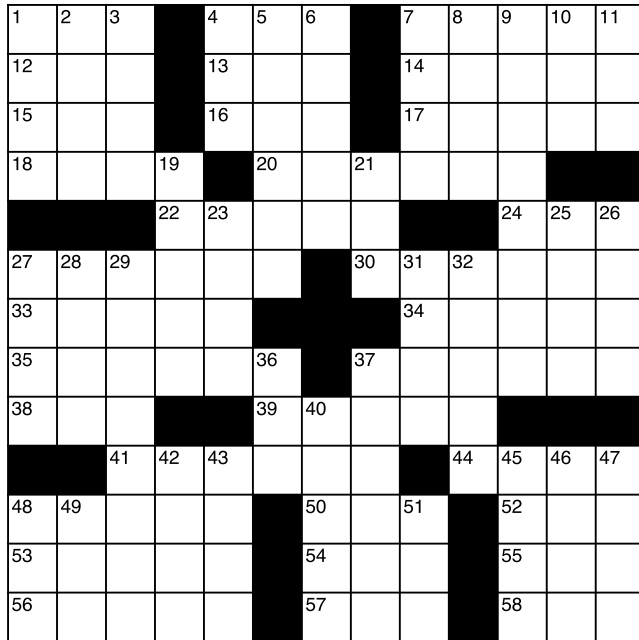
2 screen doors, 32"x80". Call 250-401-1982

Child's desk & shelf, \$75; white china cabinet, \$100; small dresser, \$20; baby crib with mattress, \$75. Call 250-788-3099 or 250-788-5799

Self-respect cannot be hunted. It cannot be purchased. It is never for sale. It cannot be fabricated out of public relations. It comes to us when we are alone, in quiet moments, in quiet places, when we suddenly realize that, knowing the good, we have done it; knowing the beautiful, we have served it; knowing the truth we have spoken it.

CROSSWORD

Puzzle no. 736



Answer to puzzle no. 737 (ran on Fri, July 23)

A	R	T		A	G	E	D		C	L	O	D
L	I	E		C	L	A	Y		H	I	V	E
L	O	N	G	H	O	R	N		A	M	E	N
			N	E	W		A	P	R	O	N	S
S	A	L	A	D		S	M	O	G			
K	N	I	T		C	H	I	S	E	L	E	D
I	T	S		S	O	U	T	H		A	Y	E
D	E	T	O	N	A	T	E		V	I	E	W
			B	A	R	S		T	A	R	D	Y
G	R	A	S	P	S		H	E	S			
R	A	C	E		E	L	A	S	T	I	C	S
E	V	E	S		S	E	N	T		N	U	T
W	E	D	S		T	I	D	Y		K	E	Y

*It's good to be blessed.
It's better to be a blessing.*

ACROSS

1. See you later!
4. Ford fuel
7. Get up
12. Straight line
13. Handicraft
14. Become narrower
15. Naval agreement
16. Not an amateur
17. Unfilled
18. Fling gently
20. Glossy paint

22. Beam type
24. _____ tide
27. Result
30. Church
33. Floor installer
34. Friend, in Barcelona
35. Shipping boxes
37. Most melancholy
38. Hesitation word
39. Cures
41. Trainee
44. Stared at
48. Narrow boat
50. Chased
52. Lime beverage
53. Dispute
54. Single
55. Kith and _____
56. Broadway lights
57. Damp and cold
58. Barnyard enclosure

DOWN

1. Imp
2. Child's toy
3. Lambs' moms
4. Breach
5. Apprehend
6. Boulder
7. Goblet part
8. Calm
9. Fruit pastry
10. Clear
11. Like a desert

19. Ice pellets
21. Circle section
23. Land parcel
25. Appeals urgently
26. Spot of ink
27. Engrave
28. Dismiss
29. Long-legged bird
31. Corridor
32. Give pleasure
36. That lady
37. Monkey's munchie
40. Blunder
42. Verb's mate
43. Casual shirts
45. Gabs
46. Prepare copy
47. Withhold
48. Is able to
49. Have being
51. Just bought



Enterprises Ltd.

Moberly Lake, BC
250.788.1845

IS NOW HIRING FOR THESE 3 POSITIONS:

1. Heavy Duty Mechanic

- Logging equipment experience required

2. Log Truck Driver

3. Processor Operator

Send resume to ppscmanager@icloud.com

Free Classifieds

Classifieds are for personal use only and are published on a first-come, first-served basis. To submit your personal classified ad
Email: classifieds@coffeetalkexpress.com

VEHICLES/PARTS/FARM EQUIP./HEAVY EQUIPMENT

2006 Western Star logging truck, Tri drive MXS Cat deleted to single turbo, 18 speed trans, 46,000 lb, 4:30 ratio diff with locks, rear sleeper, ready for work; 2001 Superior hayrack log trailer with 4 packages, 3 are ext 9'6 bunks, comes with wrappers and cinches, \$6500.00 for both. Call 250-788-5163

LT275/65 R20 Goodyear Duratrac tires studded for winter, like new, \$850. Call 250-467-2060

2005 Chevy Trail Blazer, rear wheel drive, low km, well maintained, new tires, \$5900. Call 250-556-4068

5-17inch steel rims for sale for 94 chevy 3/4 ton pickup; 4-16 inch winter tires; 1997 ford 1/2 ton supercab v8 5 speed 4x4. Call 250-401-7215

4 Goodyear LT 275/65/R18 tires, \$600. Call 250-467-2060

Husqvarna 54" cut riding lawn tractor. Comes with new 48" snow blade & tire chains. Excellent condition. Only 56 hrs from new. 24hp Kawasaki engine. \$5350 OBO. Text 780-617-0046 for pictures

JD 350B dozer. 6 way blade & winch. Under carriage in very good condition. Runs well. 3 cylinder. \$19,900. Call 250-788-3868

4 Chevy Cobalt alum 16" 5 stud rims, complete with TPMS P255 tires included, \$300 OBO. Call 250-788-3419

P245/70/R17 Goodyear tires, \$300 OBO, 80% tread. Call 250-401-1012

Bear 8' utility trailer with spare tire and tongue jack, \$500; tires and styled rims for 2001-2007 Dodge caravan, all season, good condition, \$120 for 4. Call 250-788-6808

5th wheel hitch, 20,000 lb DGS. \$275 OBO. Call 250-788-5905

Two chrome rails for ZD71 short box, paid \$1700, asking \$400. Call 250-401-1210

Older Johnsered 920 chainsaw, \$450 OBO; quad wagon, solid aluminum, tandem axle, locking lid, \$2250 OBO; used 35" tires, Duratrac, used one season, \$400 OBO. Call 250-613-2946

2008 white Pontiac Torrent, two sets of tires, AWD, 179,000 kms, DVD player, heated seats. \$4900 OBO. Call 250-788-5656

2006 Sundowner 28' angle 4 horse hauler weekend package. \$15,000. Call 250-788-4840 or 250-401-1869

Soft core baler, 6' IHS, \$5000; manure spreader, \$500; 830 case tractor, \$6000; 9' hay bine IHS, \$1500; 20' hay trailer, \$2000. Everything in good working order. Call 250-788-1095

2012 Chevy Silverado 3500, LTZ fully loaded, 6L gas engine, comes with STF AL sled deck, new GM transmission with 160,000 warranty. Runs good, needs windshield & battery. \$5500 OBO, located at Moberly Lake. Call 250-793-8852

Ladder rack for short or long box, \$300. Call 250-788-6051

Small snow blower. Call 250-788-5799

Portable bandsaw mill, \$4400; 16 1/2' Arctic gravel box with hydraulic ram, \$12,000. Call 250-788-3868

4 Nokkian Hakkapelitta tires M&S 275/55R20 117T extra load redial. 75% tread left, \$50 each, a must see. Call 250-788-3709 before 8pm

1 pair of heavy duty loading ramps, 5' long steel ramps for backhoe & small equipment, \$100 OBO. Call 250-788-3709 before 8pm

2007 Chevrolet Malibu LS, 138,000 kms, auto, battery 2 yrs old, 2 brand new winter tires, brand new key fob, nice seat cover, reg oil changes, maintained, issues with the lights on the speedometer, bumper has a dent. Works very well. \$2400 firm. Call 250-782-1972

MCKEE VACUUM TRUCK SERVICES LTD
Septic & Oilfield Services
Chetwynd Fresh Water 2011

IS LOOKING FOR

Full time certified/non-certified

MECHANIC

*Benefits after
probationary period*

email resumes:
mckeevac@outlook.com



**District of Chetwynd
HAS THE FOLLOWING
JOB OPENINGS:**

- Facilities Maintenance I
- Aquatic Supervisor

Please visit our website at www.gochetwynd.com
or contact Deanne Way at 250-401-4105
or DWay@gochetwynd.com for more information

**Ongoing
YARD SALE
Weather
permitting
5113-44 Place
NE Rodeo Sub
Sat & Sun
9am-5pm**

**PINE RIVER
HOLDINGS LTD.**
CHETWYND B.C. 250-788-9499
POSITION AVAILABLE

**GROUNDSMAN
at CRUSHER**

**MUST BE 18 YEARS OF AGE
INQUIRE AT 250-788-9499**

**Mamic Transport
Limited**



has openings for the following positions:

- CLASS 1 & 3 DRIVERS -
- HD MECHANIC -
- SHOP/WASH HELP -
- PILOT DRIVER/TCP -

Please send resume/abstract to
Mamiedispatch@hotmail.com
or call 250-788-5261 for more info

FOR SALE
MACHINE TOOLS

INCLUDING

Lathe, Milling Machine,
Drill Press
+ Numerous Small Tools

FOR MORE INFO CALL **250-788-9740**

HELP WANTED

**YOUNG'S MILLS
(1980) LTD**



**Safety Coordinator
with Logging Background**
Health/Dental/Pension provided

Fax: 250-788-2848
Email: resume@youngsmills.com

Free Classifieds

Classifieds are for personal use only and are published on a first-come, first-served basis. To submit your personal classified ad

Email: classifieds@coffeetalkexpress.com

PROPERTY

1988 3 bdrm modular home with 2 serviced lots in Tumbler Ridge. \$99,000, will consider partial trades. Call or text 250-401-1127

4 bdrm double wide with 2 cabins & good water well. Mountain views, south exposure. \$135,000. Email rowiens@live.com

2 houses on 5 acres. 1 house not finished. 1 cabin. Call 250-788-6625

Beautiful fully services large corner lot on cul-de-sac near to school. Wired, insulated storage building. Sacrifice at \$52,000 firm to the right buyer, possible extras included. Phone 250-401-7345 or 780-837-2084

WANTED

Wanted: 3 bdrm trailer to rent or rent to own in or near Chetwynd. Willing to pay \$1400/mo. Please call 778-412-1039 and ask for Payton

Wanted: 1-2 bdrm home Sept 1 or sooner for locally employed couple. Flexible budget, must be pet friendly. Call or text 2780-882-0265

Wanted: A House cleaner for 2-3 months. Call 780-816-1669

LOST & FOUND

Found: Black Pentax roll camera. Claim at Coffee Talk

FOR RENT

Available July 1 – Furnished room for rent in downtown Chetwynd, \$500/mo includes internet & utilities. Call Julie at 250-401-1985

Room for rent in Chetwynd at 5129-56st towards hospital. I am second house on the left with my name printed on entrance. \$525/month, utensils, internet included. Call 250-788-2482, between 12 and 1:00

Modular home at Pinewood, 3 bed, 1 bath, well-kept unit, large lot, all utilities included, preferably 1 year lease, \$2000/mo. Call 780-814-2873

2 bdrm 1 bath trailer, no dogs. Utilities not included, non-furnished. Shed out back for storage. Has new windows, new roof, new deck. \$100/mo, \$550 DD, car allowed with pet deposit. Text Rob at 250-401-1204

Available Sept 1 – Large room for rent in Chetwynd, clean & quiet, \$750/mo, utilities, wifi, keyed entry bdrm, laundry, parking included, furnished. Call or text 780-816-1669

Available Aug 1 – 2 bdrm home at Moberly Lake, \$1200/mo + utilities. Call or text 250-401-1127

Nice room, \$450 weekly, includes steak dinners and seafood Saturday nights. Email telfordbrent89@gmail.com for availability

Tim Hortons

Breezy Beans LTD. o/a Tim Hortons is currently looking for **FOOD SERVICE SUPERVISORS** Location: 4809 51 Avenue Chetwynd BC V0C 1J0
Vacancies: 6 vacancies **Terms of Employment:** Permanent, Full-Time, Part-Time, Shift, Weekend, Morning, Day, Night & Evening
Salary: \$17.00/hour + Benefits **Start Date:** ASAP
Experience: 1 year to less than 2 years
Education: No degree, certificate or diploma. Please contact for job description
How to Apply: In Person or mail at above locations
By Email: chetwyndtims@hotmail.ca **Phone:** (250) 788-8857

Being pretty on the inside means you don't hit your brother and you eat all your peas — that's what my grandma taught me.

HELP WANTED

YOUNG'S MILLS (1980) LTD



Log Truck Driver

Lowbedding experience an asset
 Health/Dental/Pension provided

Fax: 250-788-2848
 Email: resume@youngsmills.com
 Camp Accommodations Available



NOW HIRING

EXPERIENCED

LOG TRUCK DRIVER ROAD BUILDER

- Benefit and pension plan
- Accommodations available

Contact Joe at 250-788-5392

or email resume to
joe@harroffbros.ca



BINGO PROCEED APPLICATIONS WILL BE AVAILABLE SOON. IF YOU ARE PART OF A NON-PROFIT ORGANIZATION IN THE PEACE REGION, IT IS DEFINITELY WORTH CHECKING OUT. MORE INFORMATION WILL BE PROVIDED AS IT BECOMES AVAILABLE.
 STAY TUNED!



LIKE US ON FACEBOOK!

It is the highest form of self-respect to admit our errors and mistakes and make amends for them. To make a mistake is only an error in judgment, but to adhere to it when it is discovered shows infirmity of character.



Link's
 PUB & GRILL

NOW HIRING

FULL TIME/PART TIME

*Bartenders
and Servers*

**Must have Serving it Right Ticket*

Apply in person with resume to
 4613 - 47th Ave Chetwynd, BC
 No Phone Calls

Free Classifieds

Classifieds are for personal use only and are published on a first-come, first-served basis. To submit your personal classified ad
Email: classifieds@coffeetalkexpress.com

PETS/LIVESTOCK

Pet bunnies to give away to good home, about 2 months old. Call 250-401-1562

Pure bred pit bulls for sale. For info call 250-788-5282

Free kittens to forever home. Text 403-830-9652 or 401-418-8405

REC VEHICLES

1988 Fleetwood 24' - 5th wheel holiday trailer, comes with hitch, excellent condition. Air, heat, stove, oven, fridge. \$5000 OBO. Located in Dawson Creek. Call 250-219-0556

Skidoo toboggan, 16 1/2' wide x 61" long. Made with galvanized steel & lined with plastic bottom. Shock absorbency, 41" itch. \$300. Call 250-788-2482

2015 Sport Trek 25' travel trailer - 1 slide out awning, TV, stereo & much more. \$26,500 OBO. Call 250-788-2365

2015 Can Cam 1000cc side by side Commander XRT, only 2500 miles, winch; Arctic Cat Prowler 700cc side by side. Only 1100 kms. Full cab, heater, winch front and back, special rims & tires, windshield wiper, mint cond, new cost \$24,000, now \$13,900. Call 250-788-3868

Very fast 14' ski boat with 90 hp Johnston motor, complete with ski bar, \$250. Call 250-788-1095

SUDOKU

No. 499

Answer to no. 498 (July 23)

1		3			7		9	
		6			8			
4					6			7
		5						2
				1				
		2			3		7	8
				3				
				5		3	6	
2								1

8	1	5	9	2	4	6	7	3
9	2	4	7	6	3	5	8	1
3	6	7	8	5	1	9	4	2
2	4	6	3	8	7	1	5	9
7	3	8	5	1	9	2	6	4
1	5	9	2	4	6	7	3	8
4	8	1	6	9	5	3	2	7
5	9	3	4	7	2	8	1	6
6	7	2	1	3	8	4	9	5

I prefer to be true to myself, even at the hazard of incurring the ridicule of others, rather than to be false, and to incur my own abhorrence.



The residents of Barrow, Alaska, must be the most avid consumers of vitamin D supplements, because their town sees darkness for about 65 days of the year. The 65 days of darkness, known as polar night, is due to their geographical location above the Arctic Circle.

ZAPPER CONTRACTING

250-991-7049

azappone78@gmail.com

**HIRING
IMMEDIATELY
FULL TIME LOADERMAN**

in the
Tumbler Ridge
area



CELEBRATION OF LIFE

DONALD STRACHAN

JULY 31, 2021 AT 4PM
EAST PINE



MCKEE VACUUM TRUCK SERVICES LTD
Septic & Oilfield Services
Chetwynd Fresh Water 2011

IS HIRING
Looking for
Class 1 & 3 Drivers
Full-time position
Will train applicant if needed
Competitive wages
Will offer benefits after
probational period

email resumes:
mckeevac@outlook.com

SERVICING CHETWYND • TUMBLER RIDGE • DAWSON CREEK

COURIER SERVICE

Licensed and Insured
OAKENPRIDE VENTURES LTD
250-788-5351

Little Acre Boarding Kennels

- Individual heated pens with runs
- Personal time with each pet
- Close to town

250-788-5354
michelehitchcock@gmail.com

Beelyne Executive Services Ltd.

MONDAY TO THURSDAY
9AM - 4PM

CLOSED 12PM - 1PM
FOR LUNCH

5208 N Access Rd Chetwynd 250-788-3638



**DEMONTIGNY
CONSTRUCTION**

RED SEAL
Certified Carpentry

250-556-4548

*It has been said
that the
sweetest words
in our language
are "Mother,
Home and
Heaven"; and
one might
almost say that
the word
"Home"
included the
others.*



**PENCIL BOX
CREATIVE SERVICES**

DESIGN ~ PRINT ~ DIGITAL ~ SCAN ~ FAX
PROMOTIONAL PRODUCTS ~ LAMINATE

**ONE STOP SOLUTION
FOR ALL YOUR
MARKETING AND
ADVERTISING
NEEDS!**

Banners ~ Brochures
Business Cards
Event Invitations
Memorial Cards
Folders ~ Logo Designs
Newsletters ~ Postcards
Posters
Signage ~ Stationery
And MORE!

PH: 250-788-3422
stationery@thepencilbox.net



MARKETING/ADVERTISING
BUSINESS ESSENTIALS/STATIONERY
SIGNAGE - INDOOR/OUTDOOR

*Would that there were
an award for people
who come to
understand the
concept of enough.
Good enough.
Successful enough.
Thin enough. Rich
enough. Socially
responsible enough.
When you have self-
respect, you have
enough.*

**PINE RIVER
HOLDINGS LTD.** 
CHETWYND B.C. 250-788-9499

**POSITION
AVAILABLE**

CLASS 1 DRIVER

INQUIRE AT 250-788-9499

Tim Hortons

Breezy Beans Ltd. o/a Tim Hortons is currently
looking for **Food Counter Attendants**, at our
Chetwynd BC location, 4809 51 St Ave
Terms of Employment: Permanent, Full-Time,
Weekend, Morning, Day, Evening & Night Shift.

ASAP start Date

Salary is \$16.00/hour + Benefits + Shift Premiums
No Experience Required.

No degree, certificate or diploma Necessary

Please contact for job Description

Apply In Person at above location or by email to
chetwyndtims@hotmail.ca or, by phone 250-788-8857

Health For Your Home by Linda Franklin



**This column is designed to address economical
discoveries that will affect your health in a positive way.**

Weeds

What is a weed? If you're growing a vegetable garden with nice, straight rows, a weed is the plant that's growing in the aisle. A weed can be the plant that's peeking up between the beets that, by its shape and color, you know is not attached to a beet root. A weed is an enemy—an enemy that is sometimes not so easily identified, for they may look very much like they belong, nearly identical to the vegetable growing beside them.

Some of us can more readily identify weeds because, in order to encourage proper growth of the seeds or seedlings we have planted in past years, we learned the importance of pulling them out while they are still small. Their characteristics are not in keeping with what we want to nurture. Those of us who know weeds, can tell a young chamomile from a young carrot or dill plant, though the fine and tiny leaves look much the same. You may find weeds in your flower bed by identifying blossoms you did not plant—weeds tend to grow big leaves and tiny flowers, if any.

Cultivating a flower or a vegetable garden is much the same as tending the heart garden. While an infant is incapable of making a wise decision about his behavior, a knowing parent will encourage emotional intelligence by fostering good deeds and wise choices. Very young children can learn how to grow a healthy heart when we help them identify undesirable character traits. Take your child for a walk through the garden—that's one of the best reasons for growing one—either a child or a garden!

**Loving thoughts are little seeds
Let them blossom into deeds**



www.comparrotpuzzles.com © 2021 Bonnie J. Malcolm



Solution: 1. Rocks on cliff ledge are missing. 2. Flower on cactus is missing. 3. Arm on cactus is missing. 4. Flap on backpack is colored in. 5. Toe on boot is colored in. 6. Horn on skull is different. 7. Rock behind skull has moved. 8. Small cactus behind lady has moved. 9. River is different. 10. Stripe on shirt is wider. 11. Iguana's tail is shorter. 12. Grass on cliff behind lady is longer.

SUPPORT WILDFIRE CREWS: DO NOT TAKE UNNECESSARY RISKS IN THE BACKCOUNTRY

Continued from front page

British Columbians and visitors are urged to follow the instructions of BC Parks staff, BC Wildfire Service officials, the RCMP, conservation officers and other authorized personnel in these areas.

Destination BC's "Know Before You Go" web page is regularly updated and serves as a one-stop shop for visitors looking to access key information resources such as DriveBC, the BC Wildfire Service, Emergency Management BC and more.

It is important to recognize that British Columbia is a large and diverse province. Many areas are not directly affected and are open for business.

If the area you were planning to travel to is impacted by wildfires, or under an evacuation alert or order, connect with a local visitor centre to rebook your trip to another area of the province.

Both wildfire stories from news.gov.bc.ca

Did You Know?
EARTH'S OXYGEN IS PRODUCED BY THE OCEAN?
Ever stopped to think where oxygen comes from? Your first thought may be a rainforest, but marine organisms take the bait. Plankton, seaweed and other photosynthesizers produce over half of the world's oxygen.

250-788-2938 24 hour answering service
Cell: 250-788-5070
Specializing in Oilfield Fresh Water Delivery Services
CHETWYND FRESH WATER (2011)
MCKEE VACUUM TRUCK SERVICES LTD
Septic & Oilfield Services
Cell: 250-788-5070

PEACE VALLEY INDUSTRIES
IS LOOKING FOR QUALIFIED
JOURNEYMAN WELDERS
in Chetwynd B.C.
Please email resume to peacevalley@uniserve.com
No phone calls please

B.C. WILDFIRES: QUICK STATISTICS

The wildfire situation is continually evolving, and the information below is current as of 7 p.m. (Pacific time) on Sunday, July 25, 2021. For real-time updates on evacuation alerts and orders, visit: <https://twitter.com/EmergencyInfoBC>. For the latest wildfire information, visit: www.bcwildfire.ca

Fires:

- Wildfires currently burning in B.C.: 258
- Since April 1, 2021:
 - 1,216 wildfires
 - 414,262.04 hectares burned
- Active fires by fire centre:
 - Cariboo: 39 – Coastal: 7 – Kamloops: 92 – Northwest: 4
 - Prince George: 48 – SOUTHEAST: 68

Crews and equipment:

- Firefighters and other personnel currently fighting the fires: 3,278 (total, includes OOP and aerial support)
- Out-of-province firefighters: 72
- Helicopters and planes supporting ground crews: 198

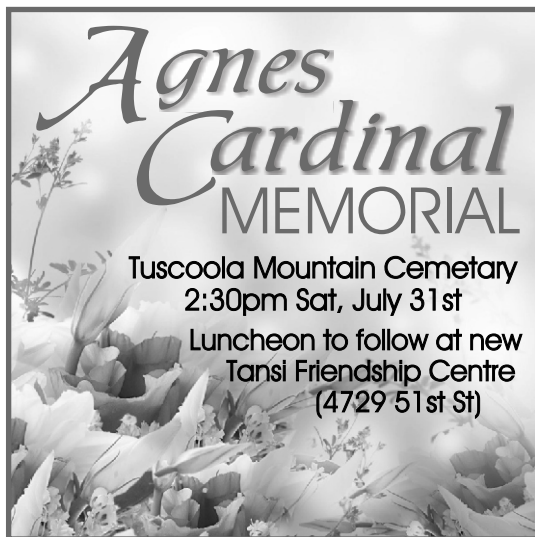
Note: Out-of-province personnel numbers do not reflect all out-of-province firefighters currently in the province. Some are travelling, and this number reflects firefighters currently engaged in incidents.

Evacuations:

- Evacuation Orders: 58
- Evacuation Alerts: 83 (+2)

Properties:

- Number of properties on order: 4,260 (-143)
- Number of properties on alert: 17,684 (+195)
- Orders and Alerts by Emergency Management BC region:
 - Vancouver Island Central Coast: 0 – Northwest: 2 orders and 5 alerts
 - Northeast: 3 orders and 15 alerts – Central: 45 orders and 53 (+1) alerts
 - Southeast: 8 orders and 8 (+1) alerts – Southwest: 0 orders and 2 alerts



Agnes Cardinal MEMORIAL

Tussockla Mountain Cemetery
2:30pm Sat, July 31st
Luncheon to follow at new
Tansi Friendship Centre
(4729 51st St)

*Every man alone is sincere. At the entrance
of a second person, hypocrisy begins.
We parry and fend the approach of our
fellow-man by compliments, by gossip, by
amusements, by affairs. We cover up our
thought from him under a hundred folds.*



The PENCIL BOX YOUR ONE STOP OFFICE SHOP

**WE'RE
HIRING**

**CUSTOMER
SERVICE REP**
FULL TIME/PART TIME
NO WEEKENDS

We're super awesome to work with!

Drop off your resume in person to 4753 51st St Chetwynd

**Do you have something exciting and positive
to share with the community?**
SHARE YOUR NEWS WITH US!

**Submit your news stories to
advertising@coffeetalkexpress.com**



*Just remember, there's a right way and a wrong way to do everything, and the wrong way is to keep trying to make
everybody else do it the right way.*

KPA Oilfield Services Ltd

4325 HWY 29 North Chetwynd, BC
Serving the Peace Country Region

Services including but not limited to

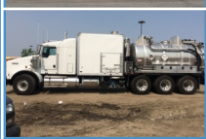
- Potable Water Services
- Gravel Trucks
- Gravel Sales
- Vac and Tank Truck Services

For Pricing & Scheduling Call

250-788-6933

Box 1295, Chetwynd BC V0C 1J0

Please email resumes to
hr@kpaoilfieldservices.ca



PINE VALLEY SENIORS

**HALL
RENTALS**

Call Loretta at

250-788-6914

CHETWYND PUBLIC LIBRARY

Library Hours

Mon & Wed: 9am - 5pm
Tues, Thurs & Fri: 9am - 8pm
Sat: 12 - 4pm

Chetwynd Public Library



250-788-2559

www.chetwyndpubliclibrary.ca